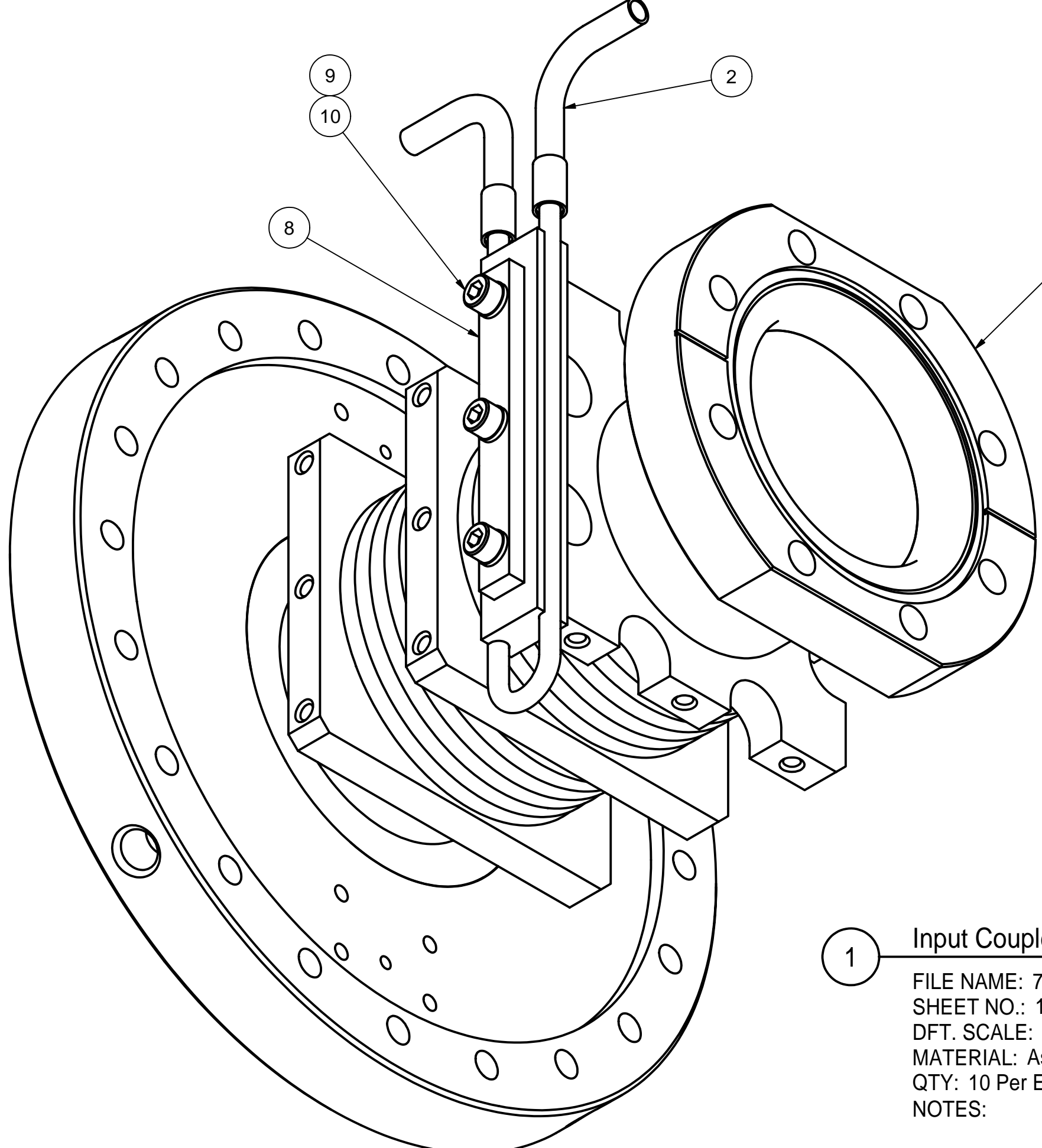
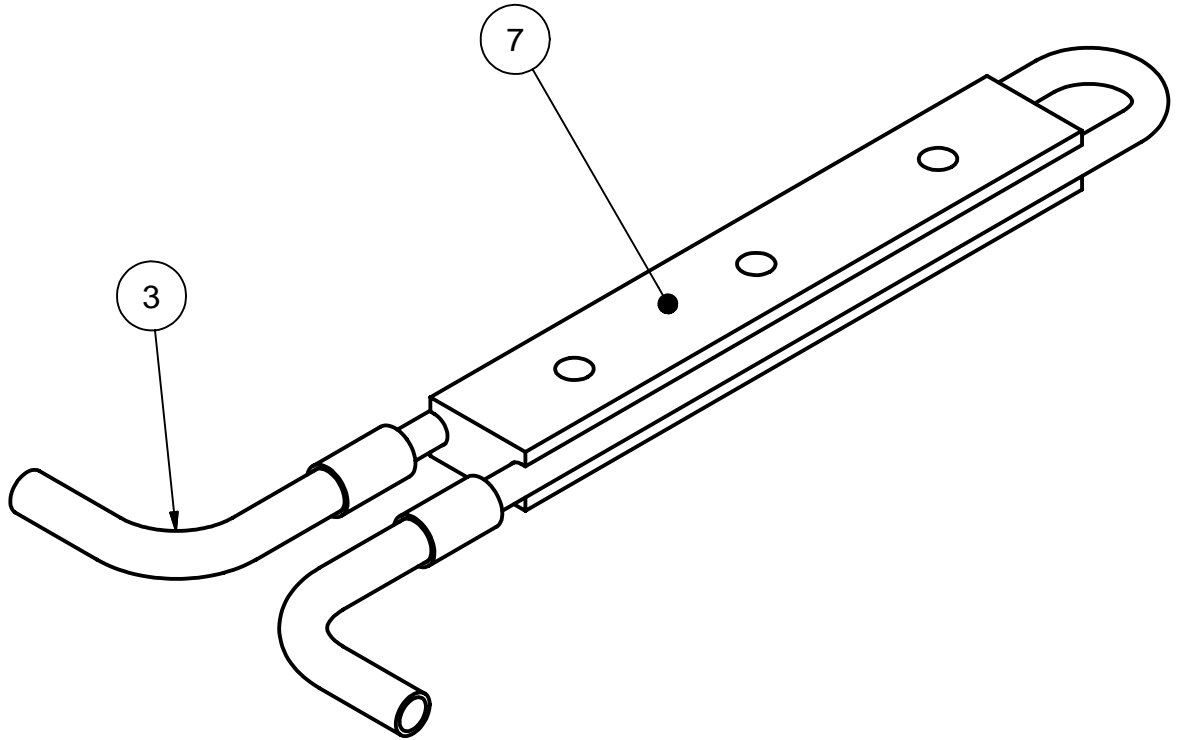
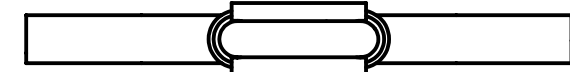
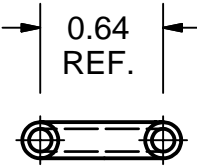
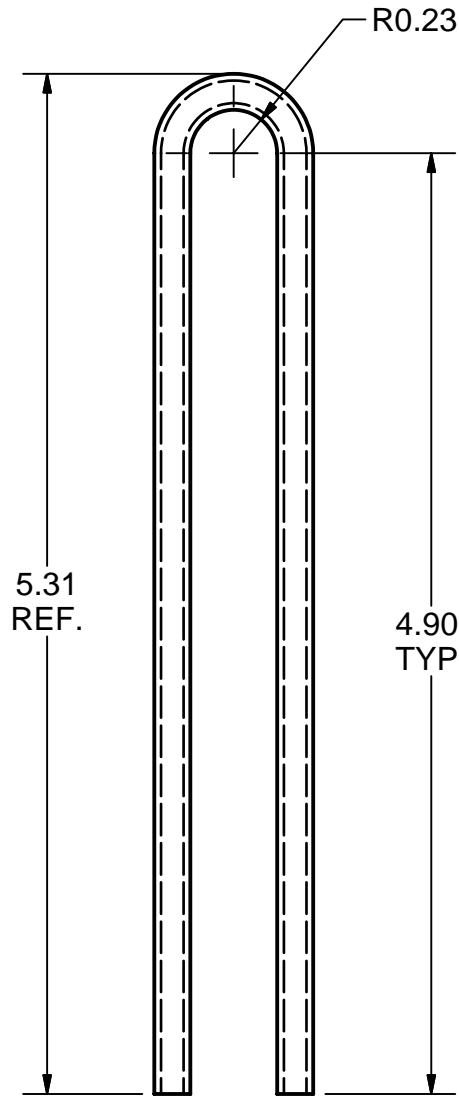


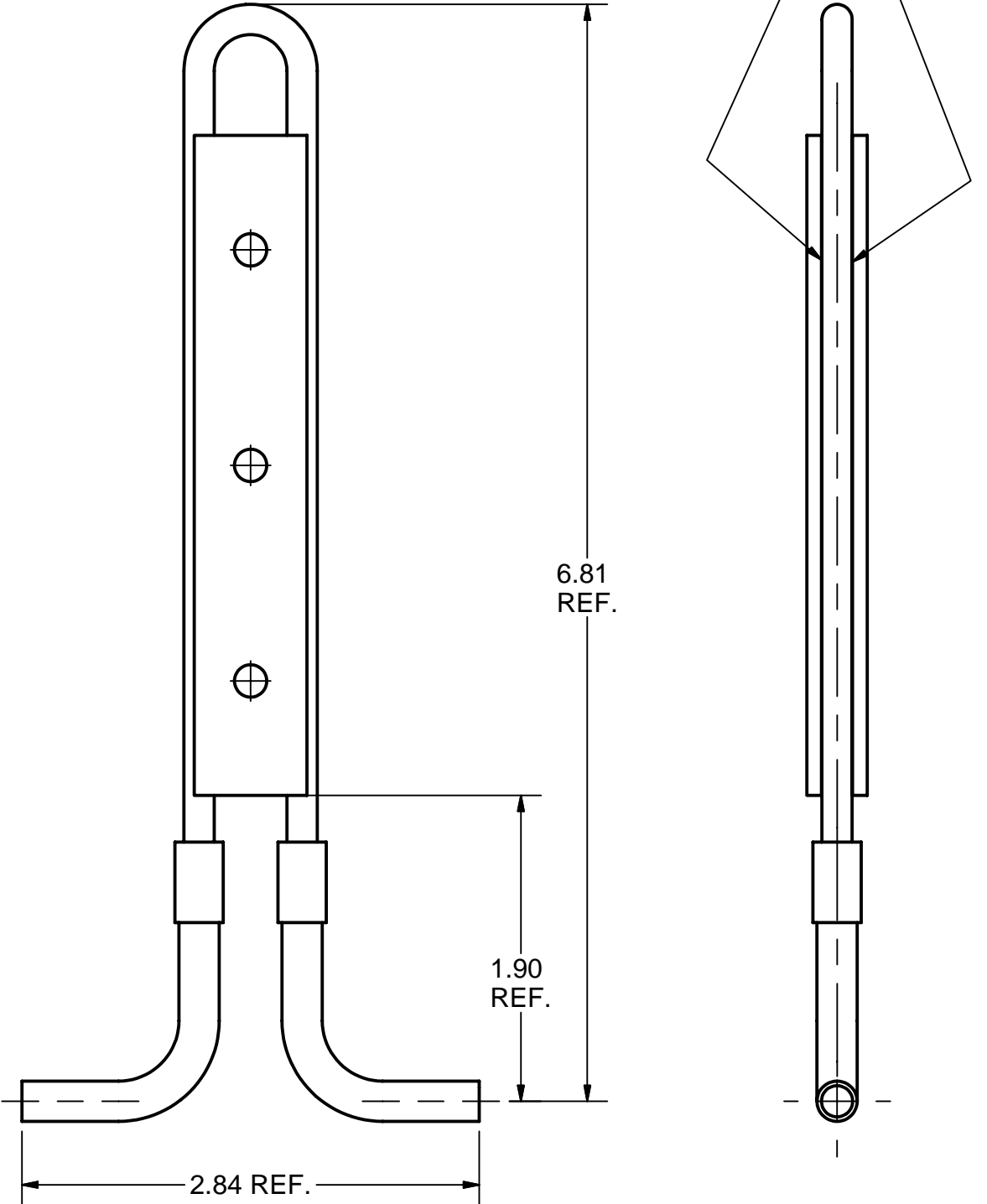
REVISIONS				
SYM.	ZONE	DESCRIPTION	DATE	APP.
A		PT-5, 0.65 DIM. WAS 0.90 -- PTS. 1, 2 + 3 REFLECT CHANGES TO PTS. 5 + 6. TMK	5/18/07	EC



INPUT COUPLER (7102-003)
COLD OUTER CONDUCTOR (100.310.000 AS)

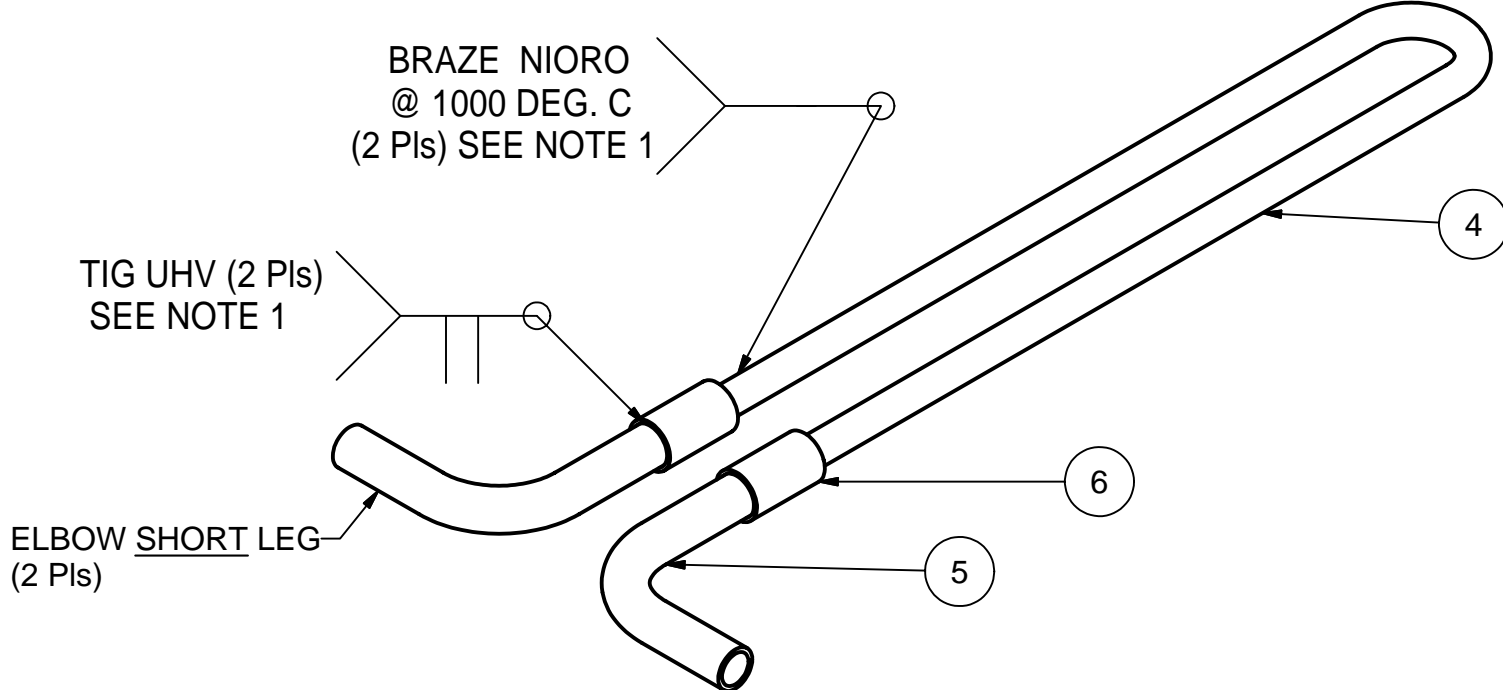


BRAZE CUSIL
@ 780 DEG. C
SEE NOTE #2



2 Input Coupler 5K Flange Cooling Assy

FILE NAME: 7102-037
SHEET NO.: 1
DFT. SCALE: 1:1
MATERIAL: As Noted
QTY: 10 Per ERL Injector Cryomodule
NOTES: 1) Braze Cooling Bar to 5K Loop Subasm after assembled, as shown here.
2) Provide Good Thermal Contact Between Tube and Cooling Bar - Item #7.



BRAZE NIORO
@ 1000 DEG. C
(2 Pls) SEE NOTE 1

TIG UHV (2 Pls)
SEE NOTE 1

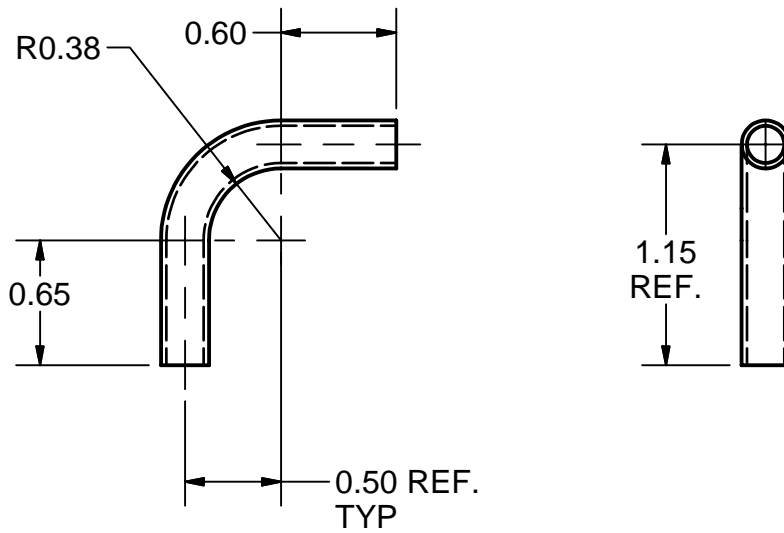
ELBOW SHORT LEG
(2 Pls)

3 5 K LOOP SUB-ASM

FILE NAME: 7102-037
SHEET NO.: 1
DFT. SCALE: 1:1
MATERIAL: As Noted
QTY: 1 PER ASSY
NOTES: 1) Tig Weld Elbows to Transitions, Then Braze Copper Tube to Transitions.

1 Input Coupler 5 K Flg Cooling Detail

FILE NAME: 7102-037
SHEET NO.: 1
DFT. SCALE: 1:1
MATERIAL: As Noted
QTY: 10 Per ERL Injector Cryomodule
NOTES:



5 90 DEG ELBOW

FILE NAME: 7102-037
SHEET NO.: 1
DFT. SCALE: 1:1
MATERIAL: 316 STN STL TUBE 0.250 O.D. X 0.028 WALL
QTY: 2 PER SUB-ASM
NOTES:

Release of final PO version for Meyer Tool - June 19, 2007.

10	Pur.	Helical Lock Washer #10	3			Stn Stl - 316	
9	Pur.	Socket Hd Cap Screw 10-23 UNF x 1/2" Lg	3			Stn Stl - 316	
8	7102-036 (Pt. 17)	Clamp Strip	1				
7	7102-036 (Pt. 13)	Cooling Bar-1		1		Copper	
6	7102-036 (Pt.12)	Tube Transition			2	Stn Stl	
5	Sheet 1	90 Deg Elbow			2		
4	Sheet 1	5 K Copper Tube			1		
3	Sheet 1	5 K Loop Sub-Asm		1	X		
2	Sheet 1	Input Coupler 5 K Flange Cooling Assy	1	X			
1	Sheet 1	Input Coupler 5 K Flng Cooling Detail	X				

FOR MACHINING LUBRICANT USE ONLY
ALKALINE DETERGENT LUBRICANT CIMSTAR 40
OR EQUIVALENT APPROVED BY CORNELL LEPP

TECHNICAL RESOURCE APPROVALS REQUIRED BEFORE FABRICATION			
	OK	DATE	N/A
DRAFTING (O'Connell):			
MACHINE SHOP (Kaminski):			
CHEMISTRY (Conklin):			
ELECTRONICS SHOP (Barley):			
FURNACE BRAZING (Sherwood):			
BEAM WELDING (Sears):			
WELDING OTHER (Gallagher):			
UTILITIES INTEGRATION (Gallagher):			
STOCKROOMS (Lockwood):			

ITEM	DWG. NO.	DESCRIPTION	G1	G2	G3	REMARKS	REV.
PLOT DATE: 6/19/2007 CAD FILE NAME: 7102-037.idw			QUANTITY				
UNLESS OTHERWISE SPECIFIED: DIMENSIONS ARE IN INCHES; TOLERANCES ON: .0 ± .02 .00 ± .010 .000 ± .005 FRACTIONS ± 1/32 ANGLES ± 0.5° ALL SURFACES ES/			DRAWN BY JGL			DRAWN FOR V.M.	DATE 4/6/2007
CHECKED BY: V.M. APPROVED BY: V.M.			SCALE D			7102-037 SH. NO. 1 OF 1	REV. A



CORNELL UNIVERSITY
Floyd R. Newman Laboratory
Ithaca, NY 14853

INPUT COUPLER 5K FLANGE COOLING
ASSEMBLY & PART DETAILS